



KIDNEY FOUNDATION
OF OHIO, INC.

ANNUAL REPORT

20

25

Includes Kidney Foundation of Ohio Real Estate Foundation Annual Report

BOARD OF DIRECTORS

Sally Balch - *Chairperson*
Tony Antonelli - *Treasurer*
Daniel McKeon - *Secretary*
Sheri Beck-Eyssen - *Immediate Past Chair*
Deborah A. Damas - *Vice Chair*
Richard Fatica, MD - *Vice Chair*
Gary Robinson, DBA - *Vice Chair*
Jeffrey R. Schelling, MD - *Vice Chair*
John R. Sedor, MD - *Vice Chair*
Chuck Smith - *Vice Chair*
Leslie A. Wazbinski - *Vice Chair*
Ron Flauto, DO
Robert Glickman, Esq.
Bob Grossman
Brad Harmon
Lynn Kalinowski
Romeo Miclat, MD
Lisa Redmond, MS, RD, LD
William Reiff
Georges Saab, MD, FASN
Jennifer Seaman
Michael Stavnick, Esq.
Sandy Temple
Tiffani Tucker

MEDICAL ADVISORY BOARD

Julie Plescia, MBA, BSN, RN - *Chairperson*
Stephanie Ambrogio, MBA - *Vice Chair*
Amy Hazel, CNP, CNE, CNN-NP - *Secretary*
Joshua Augustine, MD
Christina Delvalle, MSSA, LISW, CCTSW
Mirela Dobre, MD, MPH
Haifa Hanna, MD
Puk Jittirat, MD
RJ Picciano, BA, CHT, OCDT, CHBT
Emilio Poggio, MD
Hernan Rincon-Choles, MD
Tay Simmons
Titte R. Srinivas, MD, FAST
Sherrell Turner, MEd, MSW, LSW

DEAR SUPPORTERS –

On behalf of the Kidney Foundation of Ohio's Board of Directors, I would like to extend my heartfelt thanks for the vital role you played in supporting individuals and families affected by kidney disease. Your generosity and commitment continue to make a meaningful difference in the lives of those who rely on our services.

Having celebrated 75 years of service in 2025, we reflect on the Foundation's longstanding commitment to expanding its reach and strengthening programs that serve patients, their families, renal professionals, and the broader community. Through education, patient support, and advocacy, we remain dedicated to improving the quality of life for those facing kidney disease while raising awareness about its growing impact across our service area.

I'm proud to share a few Foundation highlights from this past year:

- When Ohio SNAP delayed November benefit payments, KFO quickly provided food gift cards to affected patients ensuring continued access to food.
- The *75 Hours of Giving* campaign in honor of our 75th anniversary raised \$5,500 in just over three short days.
- More than 1,300 individuals received direct financial assistance to enhance their quality of life while living with kidney disease.

The dedication of our volunteers, donors, and community partners allowed us to continue providing critical assistance to patients in need; an effort made even more meaningful as we marked 75 years of service to the kidney community. From medication assistance and transportation reimbursement to emergency financial support, these programs help ensure that individuals can access the care and resources necessary to maintain their health and well-being.

We are incredibly grateful for your continued partnership and belief in our mission. The progress we have made over the past seven decades would not be possible without supporters like you. As we look ahead, we remain inspired by the strength of our community and hopeful about the work we will accomplish together in the years to come. Thank you again for standing with the Kidney Foundation of Ohio and the patients we serve.

Many thanks and sincere appreciation,



A handwritten signature in cursive script that reads "Sally Balch".

Sally Balch
Chairperson, Board of Directors

ABOUT KIDNEY FOUNDATION OF OHIO

The Kidney Foundation of Ohio serves a thirty-two county area in northern and eastern Ohio and supports an affiliate chapter in Summit County. There are additionally five counties supported by the Foundation in West Virginia to assist individuals who cross into Ohio for treatment. What began as a small group of families and physicians has become the premier agency in Ohio for providing direct assistance and education to those suffering from the effects of kidney failure.

The Kidney Foundation remains the only health and human services agency in Northeast Ohio which continues to provide direct dollars to patients to assist through the devastation of kidney disease. The Foundation remains an Ohio-based organization and all funds raised in Ohio, stay in Ohio to help our patients.

MISSION

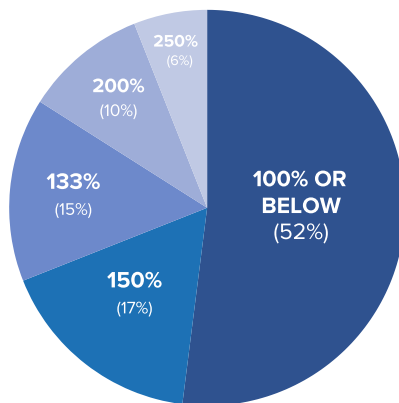
We are dedicated to providing a broad-based program of direct assistance to persons with kidney disease and promoting and providing educational programming for the general public, renal professionals, and patients and their families.



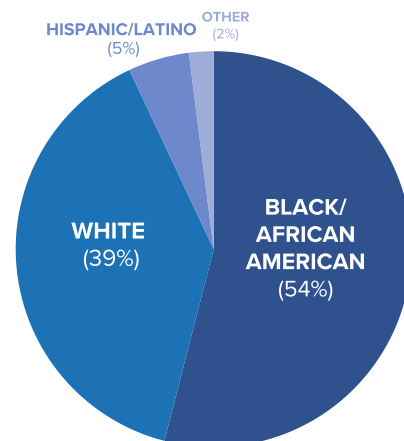
PURPOSE

Patients utilizing our services will experience a reduction or removal of the financial barrier to life-sustaining medication, transportation, or support during an emergency situation.

WHO WE SERVE



FEDERAL POVERTY LEVEL



ETHNICITY

AVERAGE YEARLY HOUSEHOLD INCOME = \$23,507

PATIENT ASSISTANCE PROGRAMS

MEDICATION ASSISTANCE

This program provides financial aid to help individuals purchase life-saving renal medications and nutritional supplements through an approved pharmacy. In emergency situations, gift cards are distributed to local pharmacies to receive immediate medications.

Medication Assistance includes **Emergency Insulin** for diabetics who have run out of their medication and are unable to access another supply.

205

PATIENTS
ASSISTED

TRANSPORTATION ASSISTANCE

Patients require safe, reliable, and affordable transportation to and from dialysis and/or transplant appointments. Many kidney patients do not qualify for other community-based assistance; the services are cost prohibitive, or transit schedules are not conducive to a patient who is ill after a scheduled dialysis treatment. Qualified and enrolled participants receive mileage reimbursement paid bi-yearly directly to the individual. In emergency situations, bus passes, cab/Lyft rides, and gasoline gift cards are issued when no other support is available.

676

PATIENTS
ASSISTED

EMERGENCY ASSISTANCE

To help lessen the financial burden of kidney disease, an emergency grant, available once a year, is issued to an individual when an incident occurs (high utility bill, auto repair) that has an impact on the patient's life. Emergency Assistance includes the Giving Tree Program that occurs during the holiday season.

In November, when Ohio SNAP delayed benefit payments, we quickly provided food gift cards to affected patients guaranteeing continued access to food. Over 100 people received cards, allowing them to buy groceries just as they would with an EBT card.

474

PATIENTS
ASSISTED

SUPPORTIVE SERVICES

INFORMATION & REFERRAL

Living with Chronic Kidney Disease requires significant lifestyle adjustments for patients and their families. This may cause individuals to feel helpless or overwhelmed, inhibiting the person's ability to follow treatment guidelines, resulting in poor medical outcomes. We provided support to patients and families allowing them to take control of their health, finances, and resources for better management and outcomes.

MEDICAL IDENTIFICATION BANDS

Personalized bands that included patient's treatment type, and the location of their access are provided at no cost. A wallet-sized medical alert card is included that lists the individual's doctor's name and telephone number, allergies, and medical conditions. In emergency situations, the identification band easily alerts first responders to the location of an individual's access. In 2025, 186 bands were distributed.

PROFESSIONAL EDUCATION

LEARNING SERIES

A total of nine (9) educational webinars were hosted for healthcare professionals, marking the largest number offered to date and drawing attendance of nearly **500** attendees!

- **An Overview of Lupus Nephritis**
In partnership with Lupus Foundation of America Greater Ohio Chapter
- **Social Media & Ohio Nursing Law**
- **Xenotransplantation: Are We Ready For Prime Time?**
In partnership with University Hospitals Transplant Institute
- **Mental Health Issues With Patients: Not Just A Social Worker's Problem**
- **Protein Energy Wasting & Nutrition Interventions**
Sponsored by Pentec Health
- **IgA Nephropathy Literature Review: Long-Term Outcomes of IgAN**
Sponsored by NephU
- **Navigating the Medicare Alphabet**
- **Continuous Glucose Monitoring (CGM) Benefits**
- **How to Ask for a Living Donor**
In partnership with University Hospitals Transplant Institute

ANNUAL RENAL SYMPOSIUM



Celebrating its 50th year, the annual two-day interdisciplinary conference featured nationally recognized experts in the field of renal healthcare, and addressed the latest issues and trends in dialysis and transplantation.

Nearly **280 renal professionals** attended including Dialysis Technicians, Dietitians, Nurses, Transplant Coordinators, and Social Workers.

Presentation topics included:

- Palliative and hospice care for renal patients
- Interdisciplinary approach to transplant
- Home dialysis
- Mindfulness, Qigong, and breathing exercises

"I would not be able to get to dialysis if it wasn't for the Kidney Foundation of Ohio."

- Transportation Assistance Recipient

COMMUNITY EDUCATION & AWARENESS



Young Surgeons Club at University School

Students learned about kidney disease, dialysis, and kidney transplantation before dissecting a pig kidney and liver.

The Foundation attended community events and health fairs year-round to provide education to community members on how to minimize risks or slow progression of kidney disease, and to share information on our programs and services.

In celebration of the Foundation's 75th anniversary, we proudly launched a new initiative, **75 Hours of Giving** campaign. Over the course of just 75 hours, from March 12th to 15th, **the campaign raised \$5,500** to directly support patients in our local communities.

In March, in honor of **World Kidney Day** we held a resource fair at the Brooklyn Branch Cuyahoga County Public Library (CCPL). Attendees visited with vendors, received information on nutrition related to kidney-disease, enjoyed food, giveaways and more.



World Kidney Day Event at CCPL

In partnership with Cleveland MOTTEP, and Boys & Girls Clubs of Cleveland, **Youth Summits** were held in the Summer and Fall. Kids aged 5-18 attended presentations with information on chronic illnesses and the importance of organ and tissue donation, enjoyed cooking demonstrations on proper diet and healthy cooking, and took part in a yoga session.



In partnership with TRIO Greater Cleveland and Lifebank, the Kidney Foundation of Ohio hosted a **community screening of *Gifted: The Docuseries*** at Silverspot Cinema. The event featured Episode One of the series, highlighting powerful stories of organ donation and transplantation, followed by a panel discussion with the series creator and a donor family.



Robert Horsey, Gifted Productions CEO

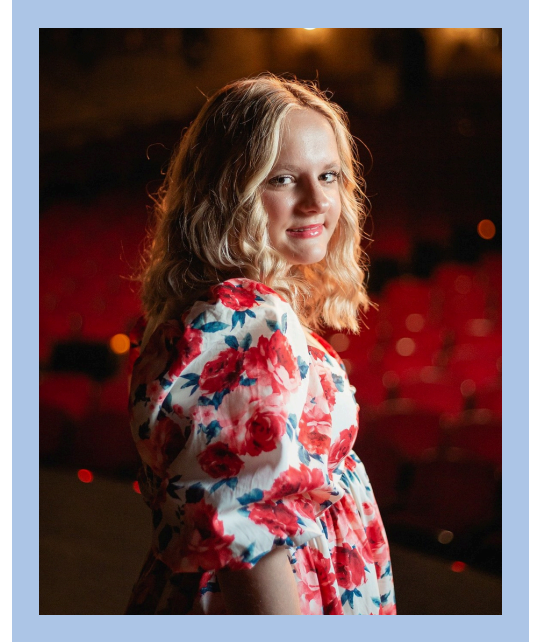
SCHOLARSHIP RECIPIENTS

An Educational Scholarship helps a deserving kidney patient, or child of a patient, achieve his/her academic goals and complete a college education or technical school. Four (4) new recipients were selected in 2025.

MAISYN

Maisyn was diagnosed with Chronic Kidney Disease (CKD) in 2018, though she has lived with chronic illness since birth. Her condition significantly impacted her childhood and teenage years, often preventing her from participating fully in school and activities. At age 12, Maisyn pursued her dream of becoming a gymnast and trained for two years before complications from her kidneys forced her to stop. Frequent hospitalizations, lab work, surgeries, and persistent fatigue meant she missed many days of school and struggled to keep up with friends.

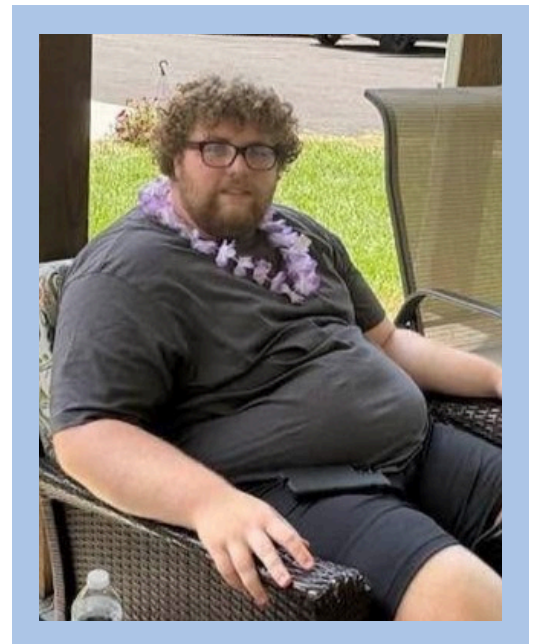
After receiving a kidney transplant, Maisyn's health and outlook began to improve. Her experiences with kidney disease have shaped her resilience and deepened her empathy for others facing similar challenges. In Fall, Maisyn attended Kent State University to pursue a degree in Digital Media. She hopes to use her skills to raise awareness about organ donation, support research efforts, and connect with others in the CKD and transplant communities - encouraging and inspiring those going through similar journeys.



ANTHONY

Anthony's life changed in May 2023 when his father was diagnosed with End Stage Renal Disease and began dialysis treatments three days a week. Before the diagnosis, Anthony's dad rarely missed his sporting events, but during Anthony's senior year many were missed due to treatment schedules and declining health. By November 2023, the demands of dialysis, doctor visits, and managing his blood pressure forced Anthony's dad to leave his job. He now performs dialysis at home, and Anthony helps with treatments, appointments, and monitoring whenever he is home from college.

Despite these challenges, Anthony remains deeply committed to both his education and supporting his father. A collegiate athlete, he balances academics with leadership roles as secretary of Phi Kappa Tau and participation in the Fellowship of Christian Athletes and the Sports Management Club. An Eagle Scout, Anthony values responsibility and perseverance, and he makes an effort to involve his dad in his college life to help keep his spirits up. Receiving this scholarship has allowed Anthony to spend more time with his father over the summer rather than focusing solely on earning money for school expenses.



In total, **9 students** received scholarships

SPECIAL EVENTS



We celebrated and honored 75 years of service at the **33rd ANNUAL GALA**, featuring presentations from leading physicians and healthcare professionals in the kidney care community. The event raised **\$151,000**.



Through the **GOLF OUTING IN MEMORY OF DENNIS KENNEDY**, **\$40,000** was raised. More than one hundred individuals participated in the scramble and enjoyed games and raffles.



Guests enjoyed food, live entertainment, raffles, and a beautiful Lake Erie sunset during the *Shine Bright Like A Diamond* **SUMMER SOIREE** at Shoreby Club where **\$62,000** was raised.



The **HARVEST WALK** was held at Mapleside Farms. More than 200 people came together to walk, enjoy family-friendly activities, and raise over **\$43,000**.

MEMORIALS & TRIBUTES

Memorial and honorarium gifts pay tribute to the life of family members or friends, celebrate a loved one's survivorship or a special occasion, birthday, anniversary, or recognize a friend or relative who have kidney disease. Below is a list of those we've received memorials or honorarium gifts in tribute of this past year.

David G. Anderson	Nancy Gale	Richard Richey
Leota Anderson	Madonna Haggerty	Dick Ritchie
Amelia Bartucci	Michael Hart	Sandra Rushford
Nick Bartucci	Linda Herring	Keith Marvel Schofield
Mircea B	Arthur Jones	Jackie Stroud
Paula Bautista	Jesse Jones	Jacob Lee Sumpter
Sheri Beck-Eyssen	Frank J. Kidd III	Barbara Trepka
Mary Kay Balch	Dr. Kathryn Jean Kitzmiller	Cheryl A. Tomczak
Bob Bordeaux	Gina LaMarco	Gail Viscomi
Jim Boomhower	Julie Marie Lemmon	Sharon Angoy Vaughn
Pat Brennan	Jack Lezak	Chad Wagy
Jeff Busby	Tone Locc	Joseph Weatherly
Sara Calabrese	Melissa May	John Raymond Weber
Patricia Campbell	Jeff McIntyre	John Weber
Charles S Ciruolo	Leda Ann Miller	Brogan Williams
Jen Clegg	David Chandler Moon	Michael Reid Yager
Jim Claus	Clifford Wesley Nurse	
Char Connell	Veronika Parkos	
Robert Cutting	Teresa Petta	
James Cusano	Robert Phillips	
Christine M. DeSapri	Emily Powell	
Angela DeRenzis	Ellen Purchase	
Lori Bauer Fetter	Mary F. Reiff	
Karen Fisher	Thomas Willard Reiff	
Denny Garner	David Roberts	

*Every effort is made to ensure the accuracy of our donor listing.
If a mistake occurred, we apologize.*

FINANCIALS

KIDNEY FOUNDATION OF OHIO

Revenue

Contributions	\$104,073
Special Events	\$313,169
Foundations & Grants	\$143,578
United Ways & United Fund	\$47,322
Membership	\$42,321
Revenue & Program Fees	\$105,830
Interest & Transfers	\$196,143
Legacies & Bequests	\$100,000
Other Support	\$ 44,181
Total Revenue	\$1,096,617

Expenses

Salaries & Benefits	\$320,805
Patient Assistance, Community Outreach & Programs	\$398,703
Professional Fees	\$43,493
Office & General	\$63,446
Special Events	\$96,524
Dues	\$1,800
Maintenance	\$2,628
Occupancy	\$30,625
Total Expenses	\$958,025

Excess \$138,592

Unaudited Cash Basis

KIDNEY FOUNDATION OF OHIO REAL ESTATE FOUNDATION

Revenue

Rental Income	\$61,250
Total Revenue	\$61,250

Expenses

Building Operations	\$28,716
Insurance	\$5,372
Office & Professional Fees	\$21,700
Sponsorship & Community Support	\$5,000
Total Expenses	\$60,788

Operating Surplus \$462

Unaudited Cash Basis

The Kidney Foundation of Ohio Real Estate Foundation was established in 2004, and is incorporated in the State of Ohio as a 501(c)(3) not-for-profit corporation.

The primary function of the Real Estate Foundation is to own, hold, and operate real estate for the Kidney Foundation of Ohio and such other 501(c)(3) charities as it may determine. Currently, space is leased at the Donald P. Shury building to Kidney Foundation of Ohio and Epilepsy Association.

— CORPORATE & FOUNDATION SUPPORT —

Above \$25,000



Centers for Dialysis Care (CDC) provides patient-focused dialysis treatment, education support, and training to individuals with kidney failure. CDC has supported the Foundation for more than 30 years through our fundraisers and patient programs.



HFH Foundation is a charitable family foundation whose mission is to fill the gaps left by larger organizations through direct assistance to those facing financial and medical challenges. Their support benefits our assistance programs, and provides education on transplantation to the community.



Ohio Renal Care Group (ORCG) is a collaborative partnership that combines the services and expertise of Cleveland Clinic, the MetroHealth System and Fresenius Kidney Care to provide life-saving education, dialysis services and kidney transplantation to patients in the Greater Cleveland area. ORCG supports our Gala, World Kidney Day, Renal Symposium, Harvest Walk and direct assistance programs.

\$10,001 - \$25,000

Davita
Norwalk Area United Fund
Otsuka
United Way of Ashland County

\$5,001 - \$10,000

Apellis Pharmaceuticals
Cleveland Clinic Department of Kidney Medicine
The Cleveland Foundation
Erie Bank
The Fortney Foundation
Fresenius Medical Care
Pentec Health
TeamLogic IT
The Community Foundation of the Mahoning Valley
United Way of Portage County
Vertex Pharmaceuticals, Inc.



Morrissey Classic 7th and 8th Grade Basketball Tournament

Entry fees were donated to the KFO

Thank you to the volunteers who donated their time and energy to the Foundation in 2025 to expand our reach, and ensure our events and programs were a success!

\$1,001 - \$5,000

Akebia Therapeutics
Allega Company
Alnylam Pharmaceuticals
American Endowment Foundation
Amgen
Ancora
Ardelyx, Inc
Bayer
Calliditas Therapeutics
CareDx
Cargill-Deicing Technology
Citrin Cooperman
Cleveland Minority Organ Tissue Transplant
Education Program (MOTTEP)
Comfort Systems USA Ohio
Cuyahoga Community College
Erie County Community Foundation
ExactCare Pharmacy
Excalibur Auto Body
Fidelity Charitable
Foundations Health Solutions, LLC
Health Foundation of Greater Massillon
ICU Medical, Inc.
Kidney Foundation of Ohio
Real Estate Foundation
Kyowa Kirin
Lifebanc
Mallinckrodt Pharmaceuticals
Miracle City Hospice
Natera
Novartis Pharmaceuticals
O'Neill Brothers Foundation
PhRMA
Preferred Vascular Group Cleveland East
Premier Bank Foundation
Ruoff Home Mortgage
Sanofi
The Sherwin Williams Foundation
Source Products Ltd/HemaSource
Summit Building Services
Takeda Pharmaceuticals
Traverse Therapeutics
United Black Fund of Greater Cleveland
United Way of Ashtabula County
United Way of Lake County
University Hospitals Cleveland Medical Center
Wm. Sopko & Sons Co.
Zing Health Holdings Inc.

\$501 - \$1,000

Abbott Laboratories
Alexion Pharmaceuticals, Inc.
Catholic Social Services
CorMedix
Emrhein & Associates
Eurofins Transplant Genomics
Fresenius Medical Care - Velporo
Fresenius Medical Care USA
Gilead Sciences, Inc.
Hillestad Pharmaceuticals
KeyBank
Lake Erie Electric
Legacy Health Services
McCarthy, Lebit, Crystal & Liffman Co. LPA
Merck & Co.
Nephro-Tech, Inc.
Patient Care America
U.S. Bank Foundation
University Hospitals Transplant Institute
Vifor Pharma
W.L. Gore & Associates, Inc.

Up to \$500

Akron Community Foundation
American Legion Auxiliary Post 572 Unit
American Nephrology Nurses Association - Cleveland
Chapter 343
BNY Mellon Wealth Management
BONENT
Dinello Handyman & Fine Carpentry DiNello
Ever Loved
Grange Insurance
Independence Excavating
MinuteMen OhioComp
Moon Education Association
Nationwide Foundation
Perrino Bulilders
Pledgeling Foundation
PNC Foundation
The Progressive Insurance Foundation
Ravenna Chapter #46 OES
Snap-on Business Solutions
Solidarity Health Network, Inc.
Steel Valley Credit Union
TRECA Spec Ed Department
United Way of Greater Cleveland
United Way of Tuscarawas County, Inc.
Wagner's of Westlake
Walmart

INDIVIDUAL DONORS

\$25,000 and Above

Linda Klais
Estate of William F. Hamm

\$10,001 - \$25,000

Dr. John Sedor & GERALYN Presti
Joan & Jack Venaleck

\$5,001 - \$10,000

Anthony & Emily Antonelli

\$3,001 - \$5,000

Sally & Richard Balch
Amelia & Tom Banc
Nick & Laura Bartucci
Deborah & Steve Damas
Drs. Adele Fowler & Richard Fatica
Patrick & Tracy Ianni
Jimmy Negrelli & Ann Jackson
Dr. Romeo Miclat
William & Lora Reiff
Dr. Jeffrey & Deborah Schelling

\$1,001 - \$3,000

Grant & Mala Bartucci
Michael Burch
Kathy Clevenger
Dr. Mirela Dobre
Kelly & Nick Dowling
Sheri Beck-Eyssen & Bill Eyssen
Angie Georgekopoulos & Dr. Ron Flauto
Robert Gehring
Justin Hufgard & Mary Sheridan
Dr. Arksarapuk Jittirat
Jeff Drescher & Cassie Kovach
Dr. Andrew Lazar
Hannah Pai
Julie Plescia
Rachel Pollack-Rincon & Dr. Hernan Rincon-Choles
Cindy & Gary Robinson
Cynthia Rosa
Dr. Georges & Jenny Saab
Christine Shay-Downer
Stacie & Chuck Smith
Michael Stavnicky
Zoe Stewart Lewis
Frances & Jeffrey Tierney
Gina & Brad Wiandt

\$501 - \$1,000

Dr. David Axelrod
Rebecca Baker
Deena & Sean Brennan
Rick & Sheila Chiricosta
Molly & Steve DeBrosse
Drs. Michael & Haifa Hanna
Brad Harmon
Amy Hayes
Amy Hazel
Alison & Ryan Heider
Heppler Family Fund
Edward Horwitz
Dr. Anne Huml
Lynn & Mike J. Kalinowski
Daniel & Laurel Kaminski
Sherri King
Dr. Mildred Lam
Daniel McKeon
Michelle McPhillips
Kristen Moon
Heather & Neil Morrissey
Dr. Joseph & Janet Nally
Michelle Norris
Blake Pitzer
Beth & Eddie Popil
Mary Ellen Powers
George & Karen Prebonick
Jennifer Prentice
Chatura Ravishankar
Lisa & Aaron Redmond
Rita & William R. Scott Jr. Fund
Dr. Marty & Margaret Schreiber
Dr. James & Barbara Schulak
Mark Simon
Elizabeth & Todd Smyth
Sandy Temple
Pat Thomas
Sherrell Turner
Paul Uhler
Joseph Vrsansky
Leslie Wazbinski
Luanna Yates
Josh Zeck
Kai Zhao

\$100 - \$500

Karen Abbott
Donna Anderson
Steven Andrasz
Elise Arendt
Scott Arnopolin
Karry Auerhamer
Kelle Bader
Mary Kay Balch

Kyle Ball
Ron Banc
Rose Barkett
Ned Bauer
Helen Baxley Smith
Rhonda Bennett
Sue Berg
Marianne Betters
Michele Beuck French
Dr. Harold Blumenthal
Rachel Boehnlein
Ginger Bradny
Nancy Breckenridge
Welheimina Brempong
Chardonay Brown
Tammy Brown
Velma Brown
Vera Brown
Robert Bruesewitz
Erica Carpenter
Liz Carrera
Dawn Carter
Joe & Cecilia Castellano
Beth & Keith Chelm
Michael Childs
Rick & Julie Chiuchiarelli
Robert Chiuchiarelli
Patricia Choppa
Pranit Chotai
Beth & Jon Christie
Jaime Christopher
Jeri Ciraolo
Andrea Ciulli
Paula Clegg
Sara Clemson
Jessica & Jim Colombo
Lynda Coughlin
Jessica Curran
Graham Curtis
Adelia Dager
Maureen D'Ambrosio
Erika Demars
Doreen Dever Papajcik
Angela DiDomenico
Chris Diehl
Leah & Cody Drake
Matthew Duck
Vicki Eberhard
Barbara & Paul Emch
Danielle Fait
Annette & Tony Fatica
Joy Feeney
Dr. Laura Ferreira Provenzano
Ron DeLollis & Lori Fetter
Lamar Floyd
Nancy Fluke
Kristen Fragassi
Sabrina Funk
Peter Fusselman
Almera Gaspe
Colleen & Ernie Gerber
Sharon & Tony Gorris
Heather Gretta
Lisa & Bob Grossman
Patricia Grzybowski
Anna Hackett
Amy & David Hackney
Matt Haddon
Jessica Hall
Jennifer Harding

Martin Heneghan
James & Janet Herring
Adele Hix
Donna Horvath
Linda Horvath
Michelle & Daryl Howard
Roger and Jane Howard
Dr. Donald Hricik
Pam Huber
Timothy Isabella
Julia Jacobs
Steven & Lori Jennings
Jasmine Johnson
Robin Johnson
Mr. & Mrs. Edward K. Suit
Ray Kardohely
Pamela Kent
Barbara M. Koeppen
Mark & Jean Koznarek
Kimberly Kramer
John & Jessie Krisanda
Larry & Barbara Kupps
Diana Lammers
Henry Landon
Matthew Layne
Sara Legeza
Laura Leu
Chelsea Lingruen
Ms. Carrie Lintner
Vasana Lipke
Tina Loeb
Susan Lowe
Donna & Christopher Malfara
Malerie Marinucci
Katie Marquard
Peg & Vincent Marquard
Nicholas Marra
Trevor Marshall
Heather Mason
Mitch Maurer
Mary McDaniel
Blake Mckelvey
Emily McKeon
Bhatia Meera
Shawn & Diane Merhaut
Sharon Mersek
Rho Merwarth
Laura Mikkila
Maria Mina
Michelle Monaco
Matt Montowski
Beatrice Montri
Mr. Timothy K. Moriarty
Catherine & Preston Moss
Ken & Karen Mullin
Delores Myers
Ms. Carrie Nappi
Tiesha Nash
Dr. Dale Marston & Lavinia Negrea
Kathy & John Negrelli
Ron & Gayle A. Nemecek
Nancy L Nevedal
Kara Oakleaf
Dr. John & Nancy O'Toole
Katie Payne
Shonda Perry
Kate Petras
Nance Phillips
Shannon Phillips
Rita Piccin

Kathleen Pilny
Tom Pipoly
Dr. Marc & Carol Pohl
Nichole Pore
Emily Porter
Sharon & Lloyd Prindle
Emily Quinn
Eric & Kathleen Quinn
Holly Radovanic
Carol Ragaller
Tiffani Tucker & Kevin Rans
Pat Rau
Marilyn & Larry Reichert
David & Mary Lynn Reifschneider
Jason Roblee
Janine Rosenthal
Brianna Ruch
Dawn & Rich Rusnak
Sharon & Richard Rutledge
Brittany Samberg
Chloe & Christopher Savvides
Christine Schneider
Laura Schoeffler
Charles Schulz
Joyce Scibilia
Shelieta Scott
Jennifer Seaman
Tami Setlock
Jeyran Shahgaldiyeva
Rollin & Judy Shank
Mark Shonebarger
Svetlana Shorr
Kathy Shreiner
Jim & Heidi Simon
Jessica Simpson
Linda J. Slama
Lauren Smearcheck
Michael Snelling
Harlan Spector
Dr. Titte & Ganga Srinivas
Marcella Striker-McDavid
Debbie Sturges
Melanie Tatge
Donna Taylor
Paula Ann Thompson
Taylor Trentman
Tracey Vaughn
John Viscomi
Lee Ann Vogelgesang
Belinda Watson
Justin Wazbinski
Nikki Wazbinski
John Wesley
Joy Wesoloski
Erik White
RA Kita Whitsett
Marcia Williams
Diane Wish
Donna Wojtowicz
David Wolf
Michelle Wolford
Robert Wood
Himabindu Yerneni
Jeanne Yungfleisch
John Zakel
Ashley Zalud
Lee & Christine Zalud

*Every effort is made to ensure the accuracy of our donor listing.
If a mistake occurred, we apologize.*



KIDNEY FOUNDATION
OF OHIO, INC.

KIDNEY FOUNDATION OF OHIO

6060 Rockside Woods Blvd N, Suite 117

Independence, OH 44131

P: (216) 771-2700

F: (216) 771-5114

www.kfohio.org

Kelly Dowling, Executive Director

Jennifer Clegg, MSW, LISW-SUPV, Client Services & Community Manager

Annette Fetter, Director of Development

Emily Powell, Assistant Development Director

Shelby Stapleton, Administrative Coordinator